

# Outreach Services

For Deaf and Hard of Hearing Children



October 2008

## National Deaf Education Agenda

by Cindy Lawrence, Outreach Director

The Outreach Newsletter will provide information again regarding each of the eight goals with updates from Indiana, as they are reported to us, or as committees continue their work. This month we will review Goal One: Early Identification and Intervention. **The Development of Communication, Language, Social, and Cognitive Skills at the Earliest Possible Age is Fundamental to Subsequent Educational Growth for Deaf and Hard of Hearing Students.**

Linda Charlebois, one of our Outreach Audiologists, was recently asked to join a joint committee of American Speech Language Pathologists and Audiologists and the Council of Educators of the Deaf. This past summer, during an intensive two-day meeting, the committee completed work on the document "Service Provision to Children Who are Deaf or Hard of Hearing, Birth to 36 months." This document replaces the 1994 American Speech-Language-Hearing Association and the Council on the Education of the Deaf (ASHA-CED) Joint Committee technical report "Service Provision Under IDEA-Part H to Children Who are Deaf and Hard of Hearing, Age Birth to 36 Months." The paper is currently under peer review and will soon be ready for publication.

The principals of service delivery recommended by the joint committee include providing family-

centered, interdisciplinary services. Family involvement is enhanced when quality interaction between professionals and parents exist and when the family feels hopeful and has realistic expectations. Formal and informal support from other families with deaf and hard of hearing children positively impact parent-child relationships. In addition, many families report deaf and hard of hearing adults as valuable sources of support.

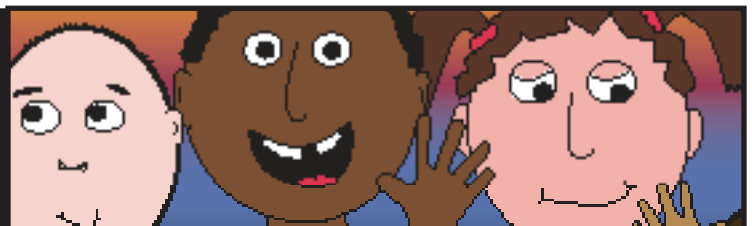
Due to the difficulty of finding enough qualified personnel to provide services to deaf and hard of hearing children and their families, regionalized services are being recommended to pool resources and create a critical mass of children to serve. In Indiana we currently have Regional EHDI Audiologists as well as regional System Points of Entry in our First Steps system. We are also currently exploring formal programs that provide parent-to-parent support as well as deaf and hard of hearing mentors.

Thank you Linda, for your work at the national level to write service delivery recommendations. Indiana is on its way to continue increasing and improving our service delivery!

Please visit this website for more information:  
National Deaf Education Project:  
[www.ndepnow.org](http://www.ndepnow.org)

### Outreach Mission:

To identify and find resources to meet the needs of deaf and hard of hearing children and their families throughout the state of Indiana.



**American Sign Language and English Literacy Project at the Indiana School for the Deaf**

The Indiana School for the Deaf (ISD) and Butler University are working together on an ASL and English literacy project for the 2008-2009 school year. The purpose is to learn about the connection between ASL skills and important areas of English reading development for first and second grade children.

Louise Fitzpatrick and Christine Wood, ASL specialists, are coordinating the project with Dr. Suzanne Reading of Butler University. The assessment results, along with the summary, will be provided after the testing period at the end of the year.

If you are interested in obtaining results of this or other related research projects contact Louise Fitzpatrick @lfitzpatrick@isd.k12.in.us



## Send us your Pictures

We want to see what your students and families are doing. Send your photos along with captions to [jjones@isd.k12.in.us](mailto:jjones@isd.k12.in.us) in JPEG format so we can consider featuring them in our newsletter.

**Does your school corporation offer American Sign Language as a foreign language in the high school?**

More and more schools are offering ASL, American Sign Language, and more hearing students are learning ASL too.

Many Deaf and hard of hearing children already are fluent in two languages, ASL and English.

Below are benefits of bilingualism found in research.

### Benefits of Bilingualism

- Speaks, reads and writes in two languages
- Possesses stronger problem-solving skills
- Has enhanced cognitive development
- Expresses greater creativity: thinks outside the box
- Easily learns a third and fourth language
- Is sensitive to other cultures
- Actively seeks multicultural friendships

source for benefits of bilingualism:  
**International School of the Peninsula**  
**[www.istp.org](http://www.istp.org)**

*Nursery - Kindergarten*  
*3233 Cowper Street*  
*Palo Alto, CA 94306-3005*  
*650-825-0264*

*Grades 1-8*  
*Cohn Campus, 151 Laura Lane*  
*Palo Alto, CA 94303-3221*  
*650-251-8500*



# Upcoming Events

**October 10**

**October 24**

**November 14**

**December 12**

**January 16**

**January 30**

**February 20**

**March 6**

**March 20**

**April 24**

**May 8**

**Infant Toddler Playgroups 9:30 am -11 am**  
**Indiana School for the Deaf,**  
**1200 E. 42nd Street, Indianapolis, IN 46205**  
**Preschool Building, Preschool Gym #131**  
Contact Lori at [ldille@isd.k12.in.us](mailto:ldille@isd.k12.in.us)

**October 18**

**November 8**

**December 13**

**St. Joseph Institute for the Deaf's Parent/**  
**Child Playgroup 10 am - 11:30 am**  
**St. Joseph Institute for the Deaf**  
**9192 Waldemar Road, Indianapolis, IN 46268**  
Contact Carrie Tamminga at  
[ctamminga@sjid.org](mailto:ctamminga@sjid.org) or call 317-442-4233

**October 11**

**American Sign Language EXPO 2008**

“Come as an exhibitor or as a participant.”

Contact Manon Culver at [manon@aslexpo.com](mailto:manon@aslexpo.com) or at VP (714) 888-8888 or FAX (714) 276-0382.

**October 19, 20, and 21**

**Early Hearing Detection and Intervention**  
**Investing in Family Involvement**  
**Conference**

Taking place in Raleigh, North Carolina. States are encouraged to send teams including parents, early interventionists, and other stakeholders.

For information visit [www.infanthearing.org](http://www.infanthearing.org)

**November 14**

**26th Annual Education Conference**  
**HEAR Indiana**

**“Building Partnerships: Working Together**  
**to Support Children with Hearing Loss”**

The conference will be at the Garrison Hotel, Indianapolis, IN

For registration information visit

[www.hearindiana.org](http://www.hearindiana.org) or call 317-828-0211



## Upcoming Events for Interpreters

See [www.edterpmeetingplace.com](http://www.edterpmeetingplace.com) for the  
events calendar

**Did you know that the Fishers YMCA  
welcomes all  
Deaf and KODA teens and tweens,  
ages 10-18?  
Indiana School for the Deaf and  
Mainstreamed students are always welcome!**

**The Fishers YMCA is offering:**

New XRKade Virtual Fitness Vault  
Homework Helper Monday - Wednesday, 4 - 6 pm  
Computer Lab Big Screen TV  
Recreational Sports Games  
Pool Table Foosball  
Air Hockey Wii  
Deaf/CODA Teen Leaders Club on Wednesdays  
Deaf Staff - Wednesdays and Sundays  
High School Y Teen Zone Nights  
Middle School Y Teen Nights  
And more! Come hang out with friends!

Y Members are free      Guests are \$8 a day

**Hours:**

Monday through Friday 3 pm to 9 pm  
Saturday 1 pm to 10 pm  
Sunday 12 pm to 4 pm

**Questions?**

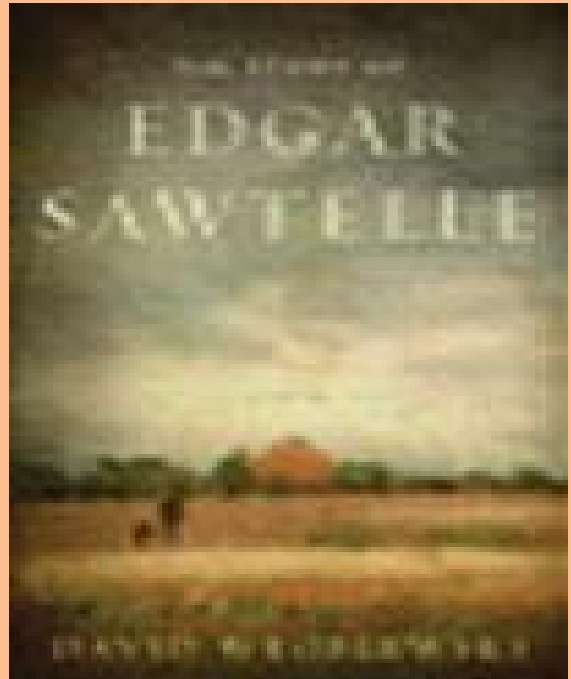
**Alison Thompson (hearing)**  
Teen Director, Fishers YMCA  
317-595-9622 extension 129  
[athompson@indymca.org](mailto:athompson@indymca.org)

**David Ritchie (Deaf)**  
Deaf Program Coordinator  
317-577-2475 (Sorenson VP)  
[smackbassin@sbcglobal.net](mailto:smackbassin@sbcglobal.net)

After school transportation available from Indiana  
School for the Deaf or Hamilton Southeastern Public

Schools to Fishers YMCA. If you live within the Hamilton Southeastern school district please contact the transportation department and request a bus for your child. Contact Terry Howell (hearing) at 317-594-4117 (voice) at the Hamilton Southeastern Transportation Department. The Fishers YMCA is not responsible for transportation. You must contact the transportation department directly.  
See you soon.

**Recommended Reading**



Oprah's recommended reading.

The Story of Edgar Sawtelle  
by David Wroblewski

The story centers on Edgar,  
who is not deaf, but was born  
without the ability to speak.

**Outreach Services for Deaf and Hard of Hearing Children has a website, [www.deaf-kids.com](http://www.deaf-kids.com), which allows you to share your event information with the entire state of Indiana.**

We value diversity and respect all viewpoints and opportunities for communication; therefore, please contact sponsors of events supporting specific methodologies. We suggest the questions on the following link be considered when viewing website and newsletter information:

<http://www.deaf-kids.com/IND/Links.asp>

**Please submit information at least one month in advance of your event. Questions? Call Joanie Jones at 1-800-722-6166 or email [jjones@isd.k12.in.us](mailto:jjones@isd.k12.in.us)**

# Meet Some of the Outreach Staff

## **Linda Charlebois**

received her Master's degree from Purdue University. She has served as an Educational Audiologist at the Indiana School for the Deaf (ISD) long enough to now be seeing the children of some of her former students. Linda provides audiological services to Middle and High school students enrolled at the Indiana School for the Deaf. You can reach Linda at [lcharlebois@isd.k12.in.us](mailto:lcharlebois@isd.k12.in.us) and at (317) 920-6264, video phone 165.138.29.91



## **Debra Liebrich**

received her Bachelor's degree from Purdue University and her Master's degree from Michigan State University. She is one of four audiologists in the Outreach Department. She has worked at ISD since 1998. She provides audiological services for students, preschool through elementary age enrolled at the Indiana School for the Deaf. You can reach Deb at [dliebrich@isd.k12.in.us](mailto:dliebrich@isd.k12.in.us) and at (317) 920-6384, video phone 165.138.29.97



## **Shannon Stafford, Pediatric/ Educational Audiologist,**

received both her Bachelor's and Master's degrees from Indiana University with concentrations in Psychology, Educational Audiology and American Sign Language. Shannon provides comprehensive diagnostic audiological services for children, ages birth to 3 years, and provides a consultative role throughout the audiological process from identification to amplification to educational and developmental considerations for parents, families and professionals. You can reach Shannon at [sstafford@isd.k12.in.us](mailto:sstafford@isd.k12.in.us) and at 317-920-6347(voice only).



## **Sheryl F. Whiteman**

has been an Educational/ Pediatric Audiologist for most of her professional career, which began at ISD in 1986. She has both her Bachelor's and Master's degrees from Indiana University (IU) and has recently completed her clinical doctorate in Audiology from IU. Sheryl serves on the assessment team evaluating, observing and participating in educational planning for Deaf and Hard of Hearing students in public schools throughout Indiana. You can reach Sheryl at [swhiteman@isd.k12.in.us](mailto:swhiteman@isd.k12.in.us) and at 317-941-4638(voice only).



## Leading the Way: Costa Rica '09



Costa Rica is home to some of the most spectacular and accessible rainforests in the world. From parrots to howler monkeys, poison dart frogs to tree sloths, its mountain and coastal ecosystems host amazing diversity. In this *Leading the Way* program, a combination of high school students who are **hard of hearing, deaf and hearing**, will learn field science techniques, delve into cultural studies and work hand-in-hand with Costa Rican students on a service project. Along the way, they study ecotourism and learn about sustainability and fair trade issues. In the process, they build the independence, interpersonal skills, and attitudes that empower students to become leaders in their communities. Through this *Leading the Way* adventure, you'll also help raise awareness in your communities and abroad about the culture of deaf and hard of hearing communities. The Global Explorers *Leading the Way* Program has been featured on ABC Nightline, the Travel Channel and CBS Sunday Morning.



### Lead

Step outside your comfort zone as you build your own leadership skills and interact with students with and without disabilities.

### Learn

Explore new cultures, understand global conservation issues, engage in community service and step up to become a responsible global citizen.

### Live

Experience the joy of travel and discover the power that you have to make a difference in the world.

### Important Details

*Application Deadline:* November 1, 2008

#### *Application Process:*

We seek high school students who are deaf or hard of hearing. You will be joined by a group of hearing students who have been learning sign language for the past year. To apply, contact 877-627-1425 or [leadingtheway@globalexplorers.org](mailto:leadingtheway@globalexplorers.org) and ask for an application to the *Leading the Way* Costa Rica 2009 Program. Learn more at [www.globalexplorers.org](http://www.globalexplorers.org) by clicking on Costa Rica or reading about *Leading the Way*.

*Nominate a Student:* Contact us with the details and we'll follow up with the student.

*Price:* \$1,995 (We FUNDRAISE with you!)

*Travel Dates:* Spring 2009

### The Global Explorers Experience

If a single trip could change your life, would you take it? Travel inspires. Travel is fun. Travel teaches us. Travel, in short, will rock your world. But we're about more than simply travel. With our program, you'll learn about science, culture, leadership and service before, during and after travel. Our goal: help you change the world for the better upon your return!



*\*Dates are tentative based on the availability of students who apply.*

March 18: Travel to Costa Rica; visit INBio; overnight San Jose

March 19: Travel to Monteverde; walk in cloud forest; overnight Monteverde

March 20: Zip through the rainforest canopy; visit town and sustainable dairy farm; overnight Monteverde.

March 21: Conduct cloud forest research; overnight Monteverde

March 22: Travel to Sarapiquí; rainforest exploration at Tirimbina; overnight Tirimbina

March 23: Conduct community service project; pineapple plantation and boat tour; overnight Tirimbina

March 24: Lowland tropical forest research and conservation; overnight Tirimbina

March 25: Return to San Jose; travel home